

## INSPECTION EQUIPMENT



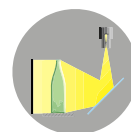
- To inspect empty and full bottles - glass and PET, crates, glasses
- design ranging from the simplest equipment installed on a conveyor all the way to a fully equipped line inspector with inspection of connected conveyors
- elimination of defective bottles to a multi-row accumulation conveyor or into containers
- possibility to sort according to defect
- output up to 60.000 bottles/hour



cleanness of base



mouth integrity



cleanliness of wall

### CHECK METHODS

- camera CCD
- high frequency
- infrared ray
- inductive
- optical

### CHECK BEFORE FILLING

- presence of residual liquid
- residual lye film on walls
- cleanliness of bottoms and walls
- neck integrity
- detection of taller and shorter bottles
- shape of bottles and colour of glass

### CHECK AFTER FILLING

- check for incompletely filled and unclosed bottles (checking of level and caps)
- presence and position of labels
- overlap of all around labels, printed date
- check of crate fullness

### EXAN CCD EQUIPMENT MONITOR

- colour TFT flat monitor with the option to monitor the equipment visually, report defects
- alignment and data archiving with touch screen control
- remote administration via the internet
- option to interconnect with the customer's information system

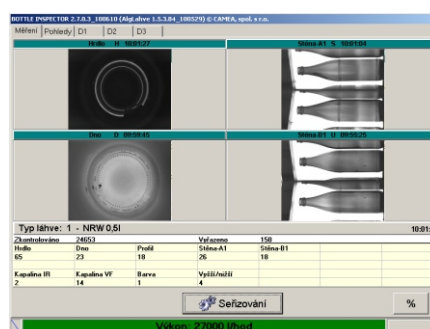


Exan 08 CCD

(complete inspection of empty bottles before filling)



Exan Sort CCD equipment monitor (inspection of shape and colour of bottles)



Exan 08 CCD -monitor

# TYPES OF CONTROL DEVICES

- Complete inspection of bottles before filling
- Inspection of residual liquids and lye
- Inspection of bottle colour, height and shape
- Inspection of incompletely filled and closed bottles behind the filling machine
- Inspection of the presence of a label on the bottle
- Inspection of the presence and position of labels, overlap of all around labels and printed data
- Inspection of levels, caps and labels on bottles
- Inspection of the correct crate load

EXAN 08 CCD

EXAN STOP 1.0

EXAN SORT CCD

EXAN LEVEL

EXAN LABEL

EXAN LABEL CCD

EXAN VIEW

EXAN CRATES



Exan View  
(inspection of the level, caps and labels of PET bottles)



Exan Label CCD  
(inspection of the presence of labels - built into the labelling equipment)

## OTHER OPTION FOR INSPECTING

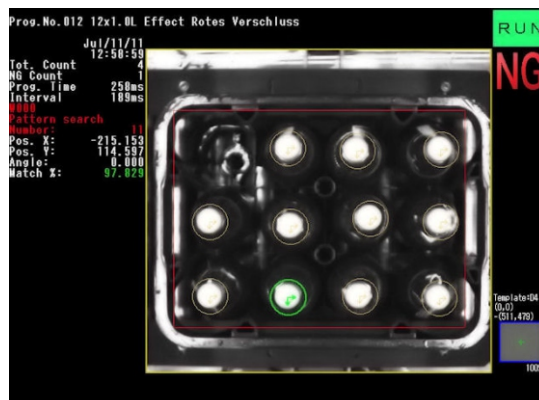
- crate inspection  
(load completeness, entirety and colour)
- other equipment according to operating needs



Exan Level  
(inspection of the drink level and presence of caps behind the filling machine)



Exan Stop  
(inspection of residual liquid before filling)



Exan Crates equipment monitor  
(inspection of crate load)

