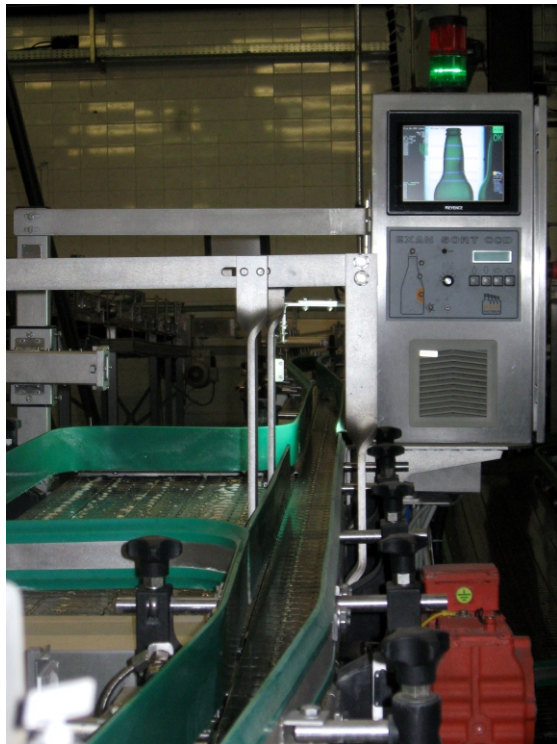


## INSPECTION OF BOTTLE COLOUR, HEIGHT AND SHAPE - EXAN SORT CCD



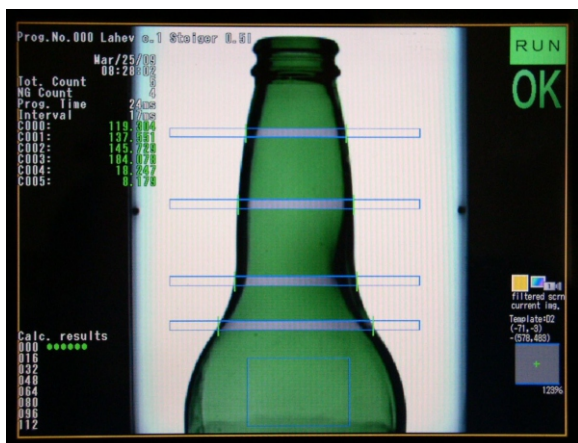
Exan Sort - Brewery Steiger Vyhne, Slovakia

### USE

- inspection of colour
- inspection of height
- inspection of bottle shape
- inspection of more bottle types
- output to 50.000 bottles/hour

### DESCRIPTION OF FUNCTION

- the equipment is controlled by the control panel with a microprocessor or using the SIEMENS S7 200 control system
- inspection principle:
  - height - OMRON optic sensor
  - colour - measuring the colour spectrum using a camera system
  - shape - using the camera system for evaluating deviations in bottle sizes on four height levels
- elimination is conducted using the pneumatic eliminator, the "Push" system - on the accumulation eliminating table
- components used:
  - Keyence camera system (camera + evaluation + system + display)
  - OMRON and LEUZE optic sensors
  - Hoerbiger pneumatics



screen of EXAN SORT



case of EXAN SORT

### EXAMPLE OF SOLUTION

- Brewery Steiger Vyhne, Slovakia- member of the PMS group (CZ)
  - 0.5l Steiger bottles
  - 0.5l NRW bottles
  - output 24.000 bottles/hour

