

INSPECTION OF LEVEL, CAPS AND LABELS ON BOTTLES- EXAN VIEW

USE

- inspection of the correct beverage level in bottles
- inspection of the presence of caps on bottles
- inspection of the presence of data on bottles
- inspection of the presence of labels on bottles
- performance output up to 30.000 bottles/hour (depending on the type of bottle)
- glass and PET bottles

DESCRIPTION OF FUNCTION

- the equipment is controlled using a SIEMENS S7-200 system
- all checks are conducted using a camera system
- elimination is conducted using the pneumatic eliminator, the "Push" system
 - on the accumulation eliminating table
 - into a container (PET bottles)
- components used:
 - OMRON optic sensors (optic + incremental),
 - Hoerbiger pneumatics
 - Keyence cameras



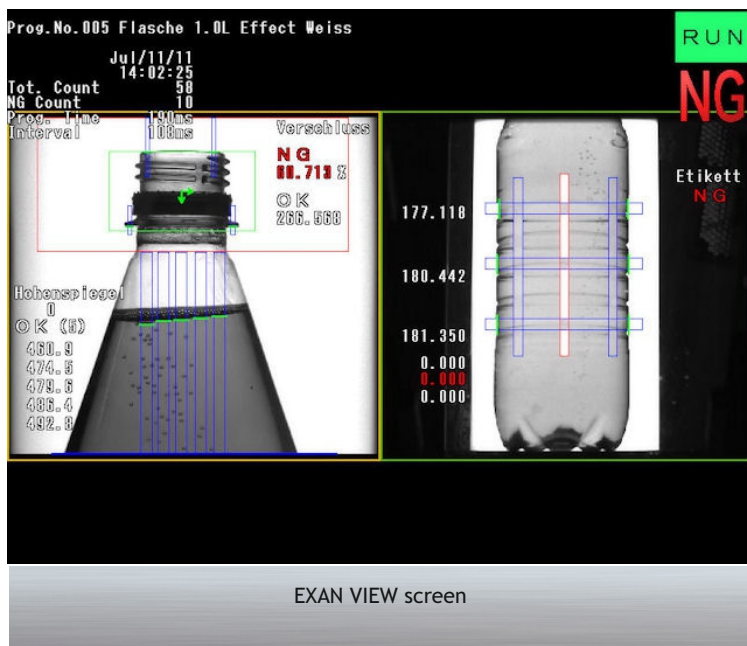
EXAN VIEW - Marien Brunnen Erfrischungsgetränke GmbH, Germany



EXAN VIEW screen

EXAMPLE OF A SOLUTION

- Application in the operations of Marienbrunnen Erfrischungsgetränke GmbH, Bergkamen, Germany
 - 0.33l, 0.5l, 1l, 1.5l PET bottles
 - output 20.000 bottles/hour



EXAN VIEW screen

